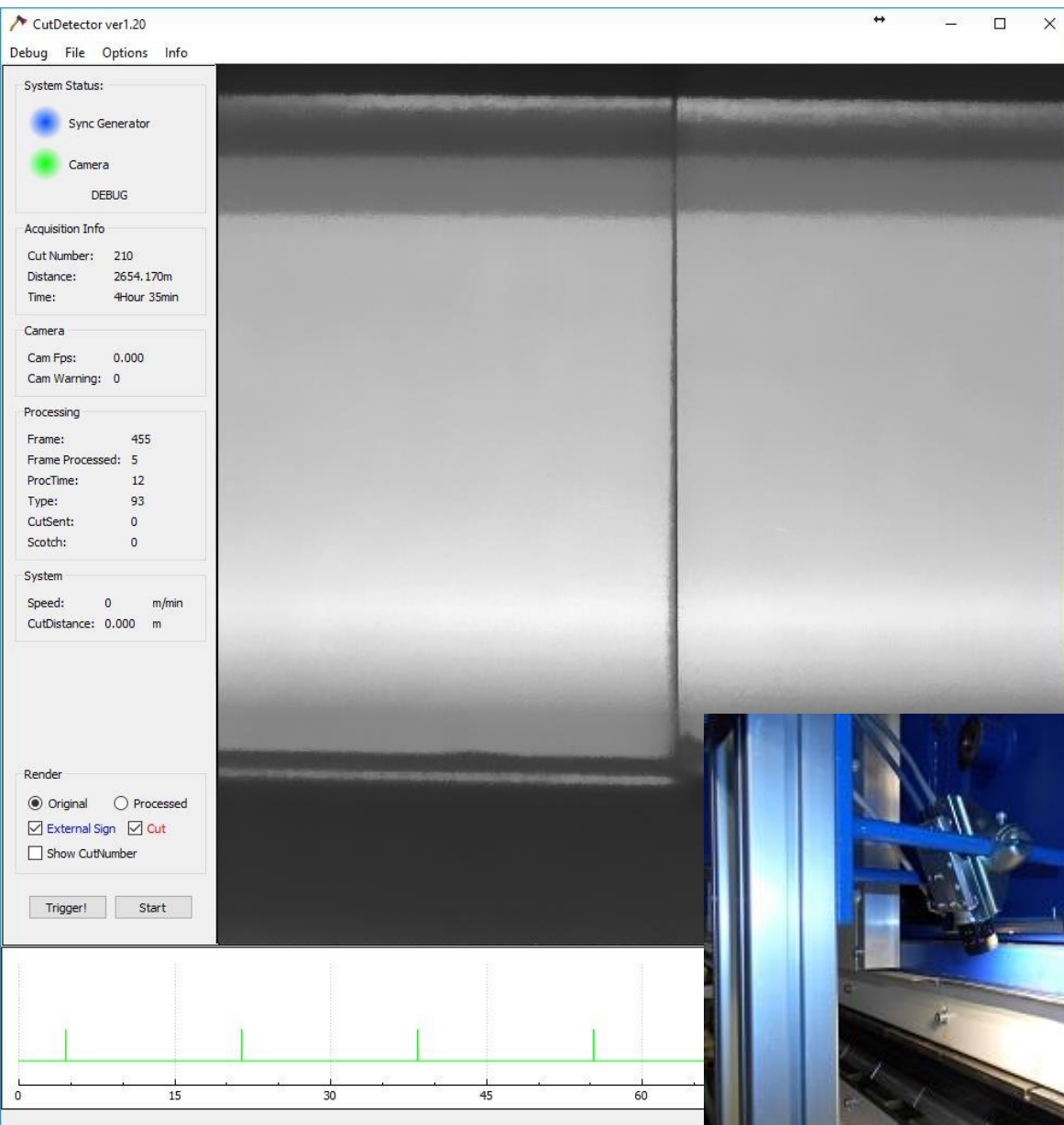


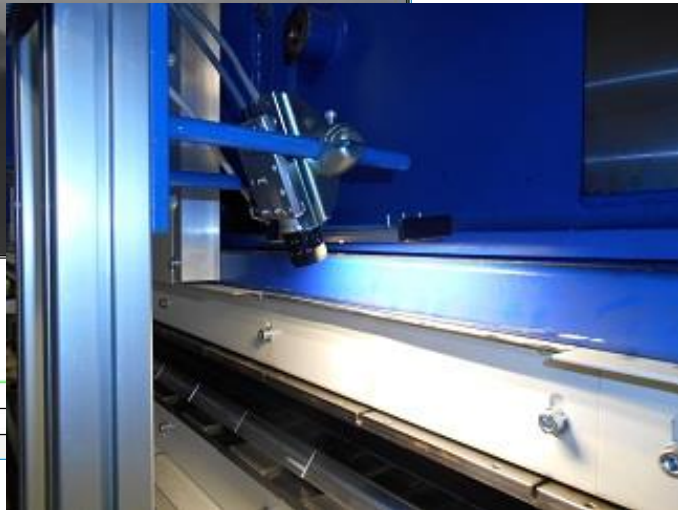
Edge Detection System for panel sandwich



The screenshot displays the CutDetector ver1.20 software interface. The main window shows a live video feed of a panel sandwich being cut. The interface includes a sidebar with the following sections:

- System Status:** Sync Generator (blue dot), Camera (green dot), and a DEBUG label.
- Acquisition Info:** Cut Number: 210, Distance: 2654.170m, Time: 4Hour 35min.
- Camera:** Cam Fps: 0.000, Cam Warning: 0.
- Processing:** Frame: 455, Frame Processed: 5, ProcTime: 12, Type: 93, CutSent: 0, Scotch: 0.
- System:** Speed: 0 m/min, CutDistance: 0.000 m.
- Render:** Original (selected), Processed, External Sign (checked), Cut (checked), Show CutNumber (unchecked).

At the bottom left, there is a graph showing a green line with vertical spikes, representing the detected cuts. The x-axis is labeled from 0 to 60. Below the graph are 'Trigger!' and 'Start' buttons.



Cut Detector System

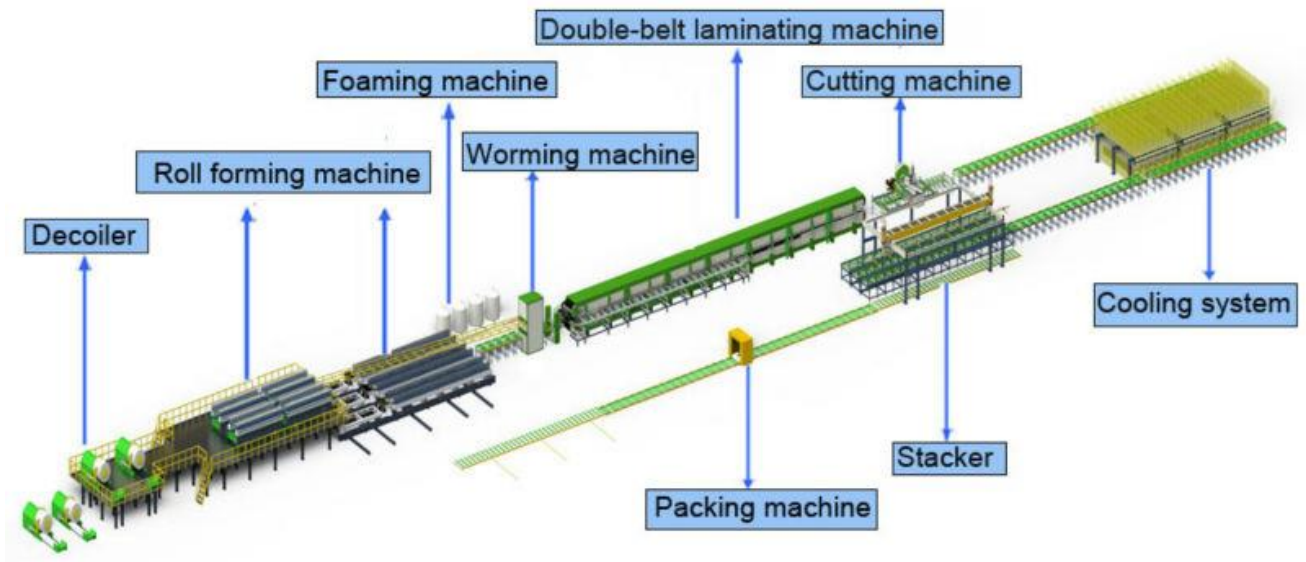
Cut Detector is an edge detection system specialized in panel sandwich production lines.

ADTS has developed a system composed of cameras and a smart board called ASC.

A unique software grabs images from a camera at 60fps. A smart algorithm is then able to detect the overlapping position of panels filtering the 'noise' produced from production material such as dust, resin and fiber that in other systems strongly effect the recognition of precise cut positions.

The camera and ASC smart board are installed on the "Double-belt laminating machine" .

An electronic signal, controlled from the ASC communicates the cutting command to the "Cutting Machine" command with an accuracy of less than 1 mm.



Cut Detector System

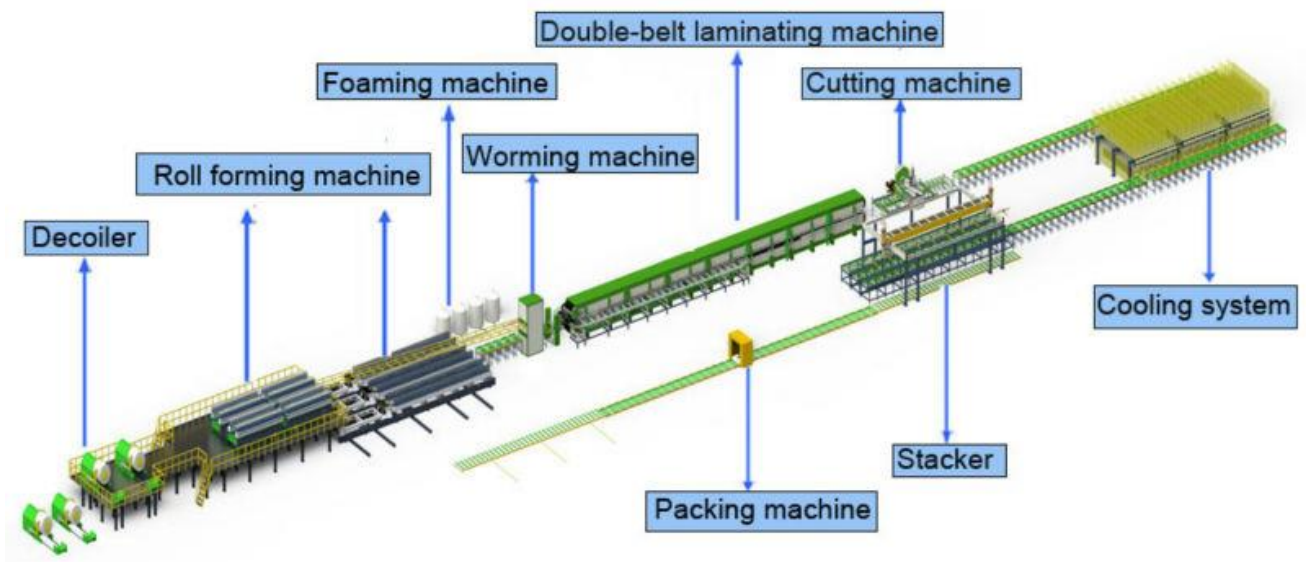
Cut Detector is an edge detection system specialized in panel sandwich production lines.

ADTS has developed a system composed of cameras and a smart board called ASC.

A unique software grabs images from a camera at 60fps. A smart algorithm is then able to detect the overlapping position of panels filtering the 'noise' produced from production material such as dust, resin and fiber that in other systems strongly effect the recognition of precise cut positions.

The camera and ASC smart board are installed on the "Double-belt laminating machine" .

An electronic signal, controlled from the ASC communicates the cutting command to the "Cutting Machine" command with an accuracy of less than 1 mm.

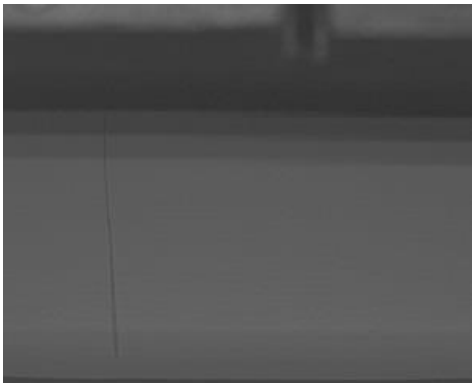


Cut Detector System

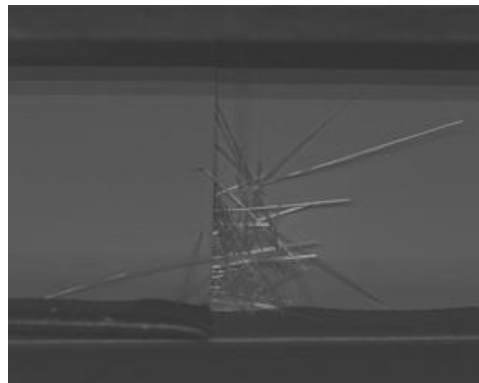
This Unique ADTS system ensures a higher efficiency and a strong cost reduction.
ADTS sensors offer top precision

Here below are some examples:
the algorithm has successfully functioned regardless of the various conditions that may arise during the production phase.

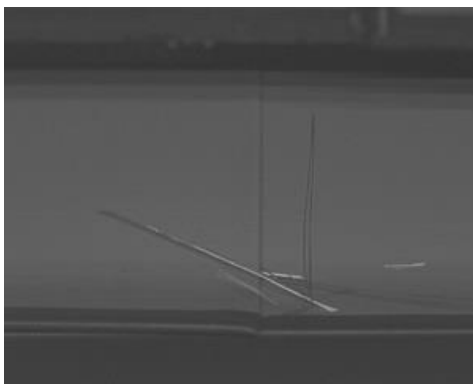
Fiber Wire



Fiber on the cutting



Fiber Wire



PU on the production

