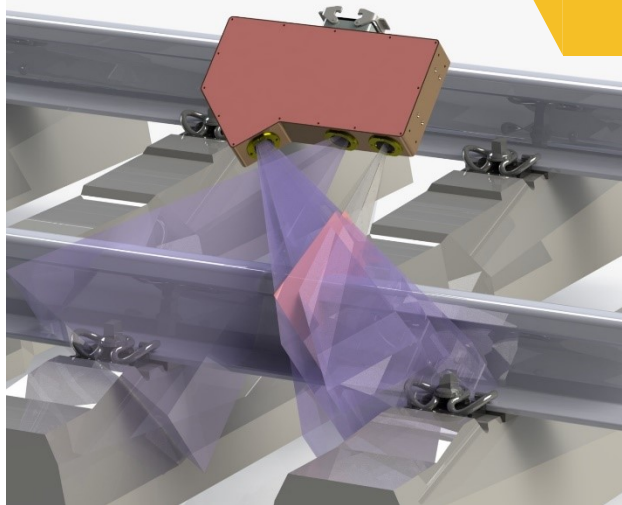


RGMS - RPMS

Rail Grinding and Profile Measurement System



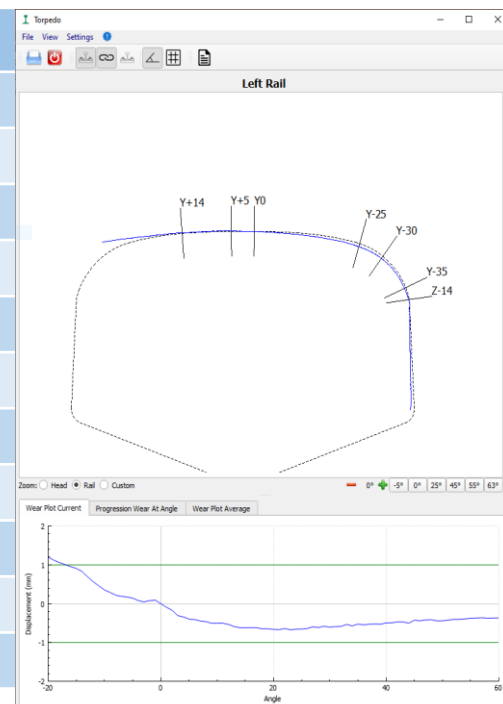
The ADTS **Rail Profile** measurement system has been designed for an installation on rail grinding machine in order to monitoring the rail shape before and after the grinding operation **RGMS** or as rail profile measurement system **RPMS**. The difference between **RPMS** and **RGMS** is the software configuration. During the operations the operator has a real-time feedback on how change the shape of the rail during the rail grinding procedure.

The software comes with many useful tools and has been developed to be very easy to use. The simple technical design allows the customer to install the system autonomously.

TECHNICAL SPECIFICATION *

Acquisition rule:	By time or by step
Humidity:	15 to 85% (no condensation)
Operating temperature:	-20° C ÷ +50° C
Measurement Resolution:	0.05mm/px
Max Measurement Speed:	80 Km/h
Rail Type	Rail 49E1, 54E1, Ri59N, 60E1
Rail Wear	±0.1mm
Protection Class	IP67
Laser Class	3B
Wavelength	450nm
Laser Output Power	500mW

The ADTS Rail Profile is compliant EN13231-2020



* some technical and software specifications can be modified upon customer request

Automotive Diagnostic Technology Solution S.R.L.

Via dell'Economia 8/M, 35010 Trebaseleghe, Padova Italy

E-mail : info@adts.it Web: www.adts.it