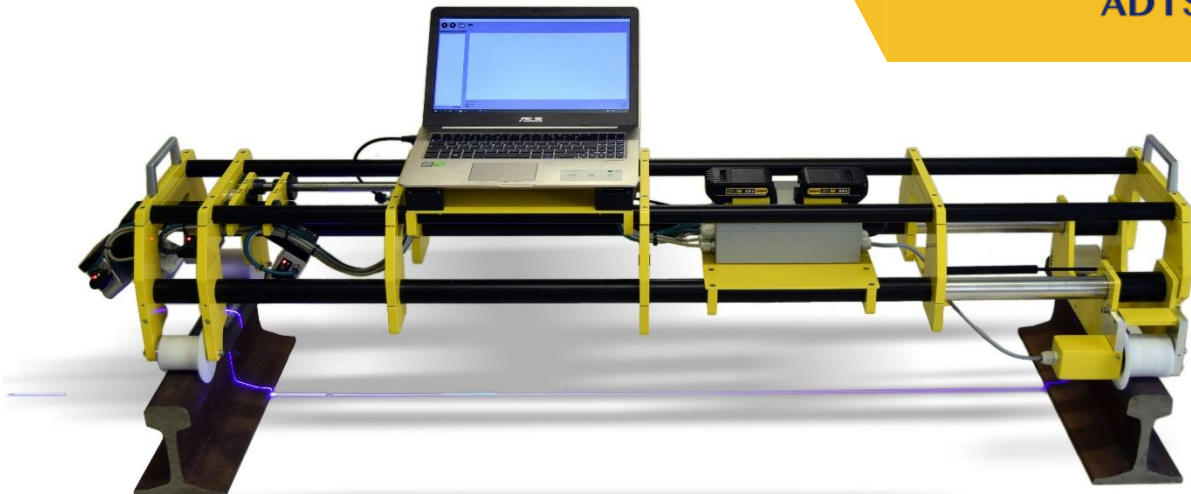


# RPT 500

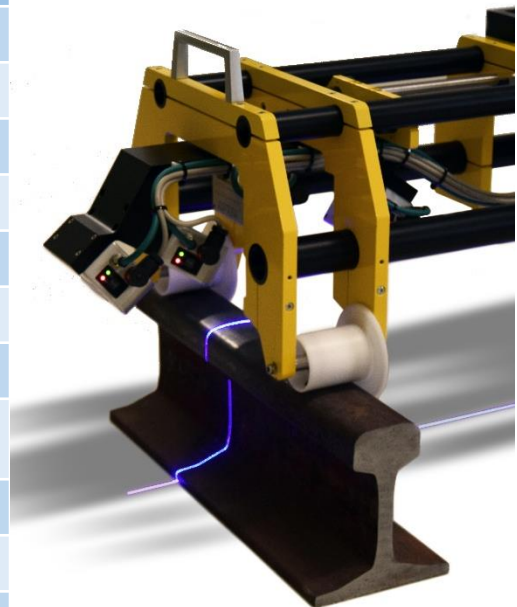
Full Rail Profile Trolley



**RPT500** is a portable trolley and is designed for measuring tracks and has been designed with a focus on low weight. **RPT500** is very simple to use and thanks to laser technology it allows to carry out non-invasive and precise measurements. **RPT500** is capable of measuring wear and saving standard and grooved rail profiles with acquisition ranges from 10mm to 2000mm. The acquisition software allows you to view the track profile in real time up to a speed of 5 Km/h. The office software can analyze the acquisition and show the wear of the tracks. The system is equipped with a robust military PC.

## TECHNICAL SPECIFICATION \*

Acquisition Step:	10mm to 2000mm
Humidity:	15 to 85% (no condensation)
Operating temperature:	-20° C ÷ +45° C
Measurement Resolution:	0.1mm
Max measurement Speed	5 Km/h
Rail Type	Rail 49E1, 54E1, Ri59N, 60E1
Rail Wear	±0.3mm
Battery	External plug for battery tools model MAKITA with Hot Swappable Modular Battery Solutions
Gauge	1435mm
Accuracy	+/- 0,3mm
Laser Type	2M



\* some technical and software specifications can be modified upon customer request

**Automotive Diagnostic Technology Solution S.R.L.**

Via dell'Economia 8/M, 35010 Trebaseleghe, Padova Italy

E-mail : [info@adts.it](mailto:info@adts.it) Web: [www.adts.it](http://www.adts.it)