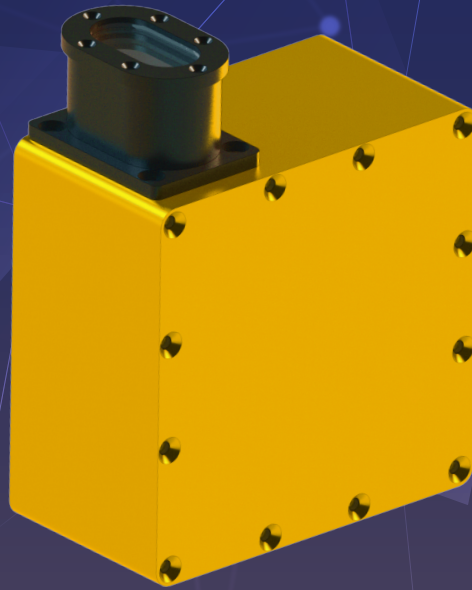


POLE DETECTOR



ACQUISITION FREQUENCY
UP TO 16KHZ



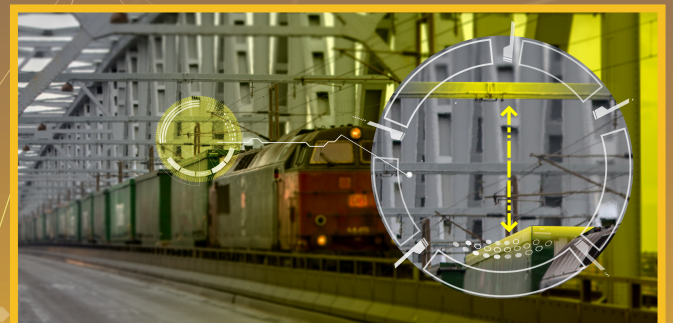
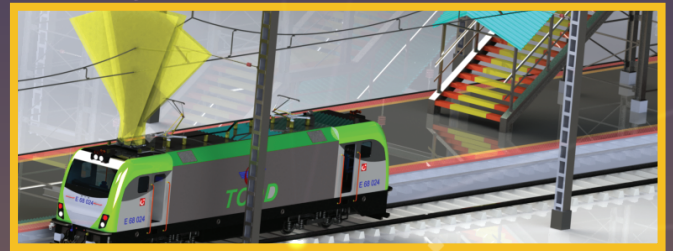
MEASUREMENT RANGE
0.5M - 5M



DECTED DIAMETER
12 - 200M



HUMIDITY
15 TO 85%



The Pole Detection Measurement Unit (PDMU) detects and count poles along railroad line.

The PDMU measurement system is composed by 4 units, 2 units for each side on the vehicle roof. Each unit is composed by an high frequency laser device able to recognize the presence of pole. The PDMU measures by TOF laser, and thus contactless, at travelling speeds of up to 350 km/h. Thanks to a laser source unit, the PDMU is not affected by daylight and is therefore able to operate reliably during the day, in tunnels, under bridges or at night.

AUTOMOTIVE DIAGNOSTIC TECHNOLOGY SOLUTION S R L

VIA DELL'ECONOMIA 8/M, 35010 TREBASELEGHE, PADOVA ITALY

INFO@ADTS.IT WWW.ADTS.IT

ADTSOLUTION